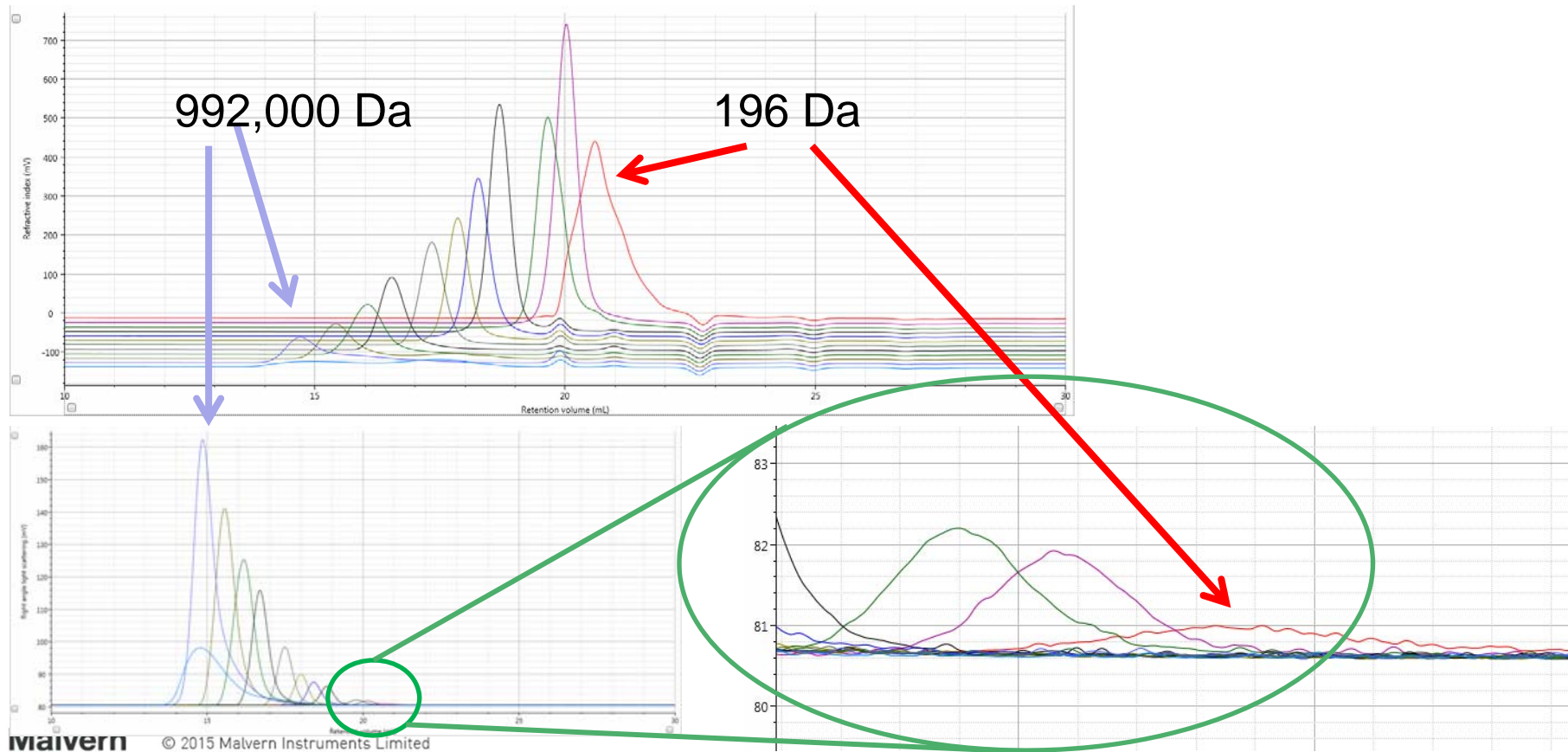
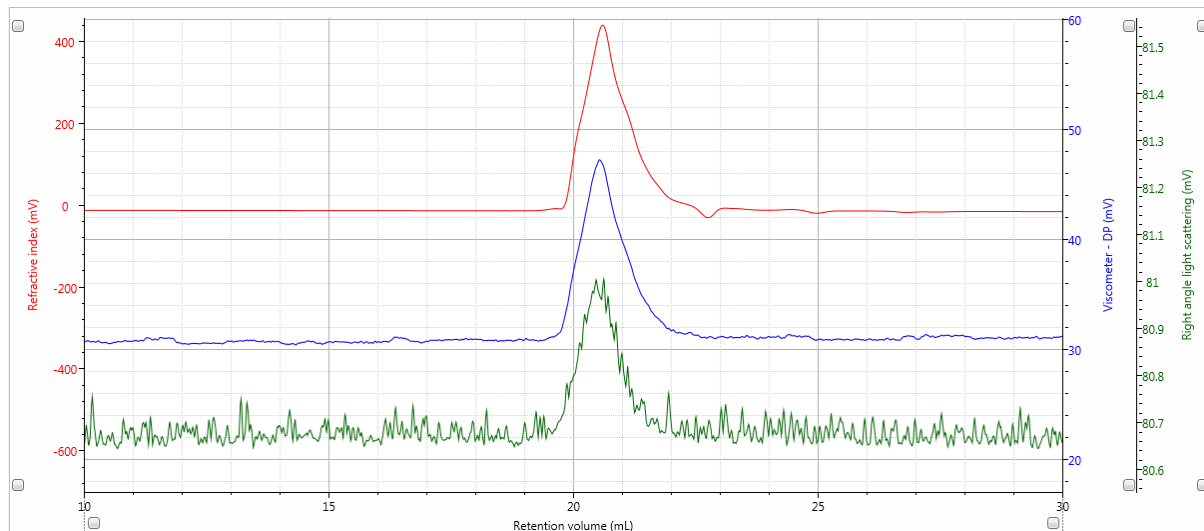


PEO standards - RI and RALS 196 to 992,000 Da



PEO 196 Da by Triple Detection !



Results by sample and peak	
Parameter	Inj. 1 PEG 196 Pd 1.01 IV...
	Peak 1
RV (mL)	20.6133
MWn (g/mol)	49.7174
MWw (g/mol)	230.7168
MWz (g/mol)	269.9535
Pd (Mw/Mn)	4.6406
IVw (dL/g)	0.0353
Rhw (nm)	0.5113
Rgw (nm)	N/C



© 2015 Malvern Instruments Limited

Instrumat AG

Ch. de la Rueyre 116-118

CH-1020 Renens

Switzerland

www.instrumat.ch



INSTRUMAT

your local support